

CENTRAL PLAINS SEED GUIDE



EDITION ONE



Nice to meet you!

I've been part of the Limagrain Cereal Seeds team for a while now, and I'm even more excited for the future than I was on day one.

At LCS, we're focused on improving wheat varieties for the region through breeding and testing right here in the Central Plains. We develop wheats that match the agronomic needs and specific conditions of local fields. Whether you need an herbicide-resistant line to help with grassy weed control, a high-yielding variety you can graze, the right disease tolerance to plant behind corn or any number of other growing considerations — we have a variety to fit that acre.

Our Central Plains research team tests thousands of varieties across the area every year, looking for the next great variety that fits the needs of wheat growers like you.

Having spent my life in the heart of the Central Plains, I understand the variability and unique challenges faced by the growers here. It's a great feeling to be part of a farmer-owned company that values local product development, listens to growers and brings products to market that help overcome these challenges.

The varieties in this seed guide have been proven to perform at a high level across various conditions and growing systems. Read on for the data, and check out our up-and-coming genetics in the back of the guide.

My goal is to help you find the best products to fit your agronomic needs and production system — so you can get the most from your wheat crop. I look forward to working with you!

Dan Dall

Regional Commercial Manager

📞 316.452.3505 ✉️ daniel.dall@limagrain.com



Bred to thrive

TECHNICAL DATA	4	
HARD RED WINTER WHEAT, CONVENTIONAL		
LCS Runner.....	6	
LCS Radar.....	8	
LCS Julep.....	10	
LCS Valiant.....	12	
LCS Chrome.....	14	
HARD RED WINTER WHEAT, COAXIUM		
LCS Warbird AX.....	16	
LCS Galloway AX.....	18	
LCS Steel AX.....	20	
LCS Atomic AX.....	22	
LCS Helix AX.....	24	
LCS Photon AX.....	26	
HARD WHITE WINTER WHEAT		
LCS White Lightning.....	28	
FORAGE WHEAT		
T173.....	30	
FORAGE BARLEY		
LCS Saturn.....	31	
TRITICALE		
LCS Bar.....	32	
WHEAT QUALITY		33
CUTTING-EDGE WHEAT GENETICS		34
COMING SOON TO A FIELD NEAR YOU		35

Agronomic, disease resistance and quality scores in this guide are based on the most recent data available at the time of publication, Dec. 1, 2023. Visit LimagrainCerealSeeds.com year-round to see the latest trial data.

Award-winning wheat

LCS varieties led the dryland winter wheat pack in the National Wheat Yield Contest (NWYC) this year. Our farmers won Bin Buster and 1st Place in the dryland winter wheat category, and they nabbed 1st, 2nd and 4th Place in dryland wheat winter increase — plus 10 state-level wins.

All NWYC national award recipients won a trip to the 2024 Commodity Classic in Houston, Texas, and we are looking forward to celebrating them at the National Wheat Foundation event.

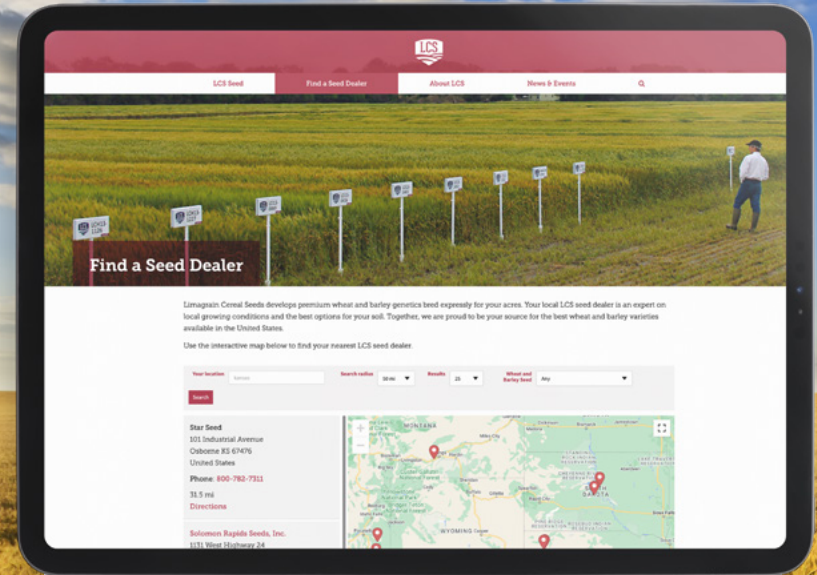
We want to celebrate you

Are you scoring big yields with your LCS seed? Don't keep your big returns to yourself! **Enter the National Wheat Yield Contest — free.** LCS will pay the fee for any LCS wheat entry. Bragging rights, a shiny LCS award and a trip to the Commodity Classic could be yours.

2024 NWYC winter wheat entries are due in mid-May. Get the details at YieldContest.WheatFoundation.org



2022 Central Plains NWYC winners and seed dealers at the 2023 Commodity Classic: Dylan Lindsey, Cheryl Lindsey, Tom Hill with DT Farms and Casey Cantwell.



Visit us 24/7

LimagrainCerealSeeds.com

is home to the best wheat genetics in the Central Plains. Stop by anytime to find your next high-performance variety, get the most up-to-date data and contact your local seed dealer.



Racing to victory



Excellent yield potential



Well-rounded disease protection



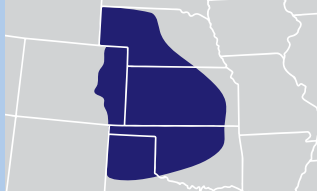
Good tolerance to Fusarium head blight



Broad area of adaptation

HARD RED WINTER WHEAT LCS Runner

ADAPTATION



YIELD			
	BU/AC	LCS Runner	Trial Avg. MEAN
2022 KSU Dryland Larned, KS	54		113% of mean
2022 KSU Dryland Newton, KS	57		101% of mean
2022 KSU Dryland Hutchinson, KS	77		115% of mean
2022 OSU Regional Chickasha, OK	73		103% of mean
2022 OSU Regional Lahoma, OK	78		103% of mean
2023 LCS Trial Wichita, KS	43		116% of mean
2023 LCS Trial Watonga, OK	59		134% of mean
2023 LCS Trial Tonkawa, OK	47		112% of mean

AGRONOMIC FEATURES					
	LCS Runner	SY Monument	WB 4401	KS Hamilton	Showdown
Test Weight	Very Good	Good	Good	Good	Average
Protein %	Above Avg.	Average	Average	Average	Average
Winter-Hardiness	Excellent	Excellent	Good	Good	Good
Heading (Julian)	Medium	Medium-Late	Medium-Early	Medium	Medium-Late
Plant Height (in.)	Medium-Tall	Medium-Tall	Medium-Short	Medium	Medium
Straw Strength	Very Good	Average	Good	Average	Average

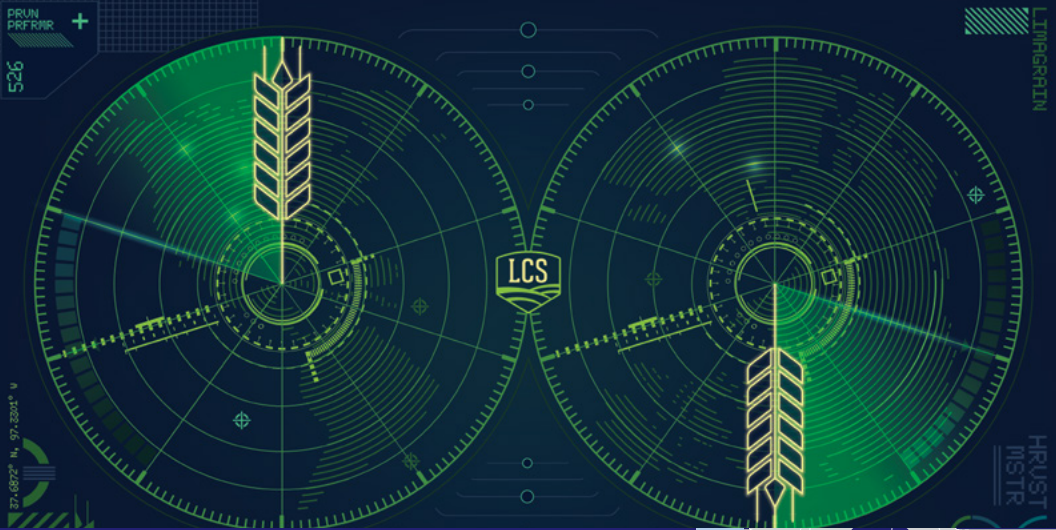
Data Sources: 2024 Wheat Varieties for Kansas and the Great Plains, 2023 LCS CP Y4 Master, 2023 Carnegie

DISEASE TOLERANCE			
	7-9: Susceptible	4-6: Intermediate	1-3: Resistant
Stripe Rust		4	
Leaf Rust		4	
Stem Rust		5	
Fusarium Head Blight		5	
Soil-Borne Mosaic		1	

All available public and private data used in compiling scores

END-USE QUALITY			
Overall Quality	Baking Quality	Dough Properties	Milling Quality
Acceptable	Acceptable	Acceptable	Most Desirable

Data obtained from LCS Quality Laboratory



Put big yield on your radar

Excellent
High Plains
performance

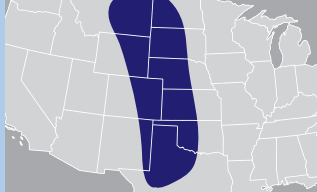
Intermediate
tolerance to
wheat streak mosaic

Solid
disease package

Acid soil
tolerance

HARD RED WINTER WHEAT LCS Radar

ADAPTATION



YIELD			
	BU/AC	LCS Radar	MEAN
2023 LCS Trial Imperial, NE	102 95		107% of mean
2023 LCS Trial Garden City, KS	104 92		113% of mean
2023 LCS Trial Russell, KS	51 37		138% of mean
2023 KSU Dryland Tribune, KS	51 34		151% of mean
2023 KSU Dryland Ellsworth, KS	40 37		106% of mean
2023 KSU Irrigated Garden City, KS	86 73		118% of mean
2023 KSU Dryland Russell, KS	39 34		114% of mean
2023 KSU Dryland Colby, KS	77 55		140% of mean

AGRONOMIC FEATURES					
	LCS Radar	SY Monument	WB 4401	KS Hamilton	Showdown
Test Weight	Average	Good	Good	Good	Average
Protein %	Average	Average	Average	Average	Average
Winter-Hardiness	Very Good	Excellent	Good	Good	Good
Heading (Julian)	Medium	Medium-Late	Medium-Early	Medium	Medium-Late
Plant Height (in.)	Medium-Tall	Medium-Tall	Medium-Short	Medium	Medium
Straw Strength	Very Good	Average	Good	Average	Average

Data Sources: 2024 Wheat Varieties for Kansas and the Great Plains, 2023 LCS CP Y4 Master, 2023 Carnegie

DISEASE TOLERANCE			
	7-9: Susceptible	4-6: Intermediate	1-3: Resistant
Stripe Rust			
Leaf Rust			
Stem Rust			
Fusarium Head Blight			
WSMV			
Soil-Borne Mosaic			

All available public and private data used in compiling scores

END-USE QUALITY			
Overall Quality	Baking Quality	Flour Protein	Milling Quality
Desirable	Desirable	Desirable	Desirable

Data obtained from LCS Quality Laboratory



What you can bet on

National Wheat Yield Contest winner

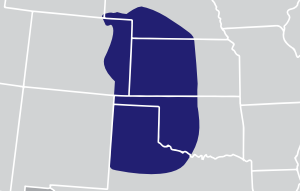
Large head size and good tillering ability

Tolerant to Hessian fly

Broadly adapted throughout the Central Plains

HARD RED WINTER WHEAT LCS Julep

ADAPTATION



YIELD			
	BU/AC	◆ LCS Julep ◆ Trial Avg.	MEAN ▶
2022 KSU Dryland St. John, KS	36 34		104% of mean
2022 KSU Dryland Russell, KS	82 73		113% of mean
2023 KSU Dryland Russell, KS	37 34		109% of mean
2023 KSU Dryland St. John, KS	29 25		114% of mean
2023 OSU Regional Cherokee, OK	44 39		113% of mean
2023 OSU Regional Chickasha, OK	80 77		104% of mean
2023 OSU Regional Lahoma, OK	68 64		106% of mean
2023 UNL Rainfed Deuel County, NE	80 73		111% of mean

AGRONOMIC FEATURES					
	LCS Julep	SY Monument	WB 4401	KS Hamilton	Showdown
Test Weight	Very Good	Good	Good	Good	Average
Protein %	Above Avg.	Average	Average	Average	Average
Winter-Hardiness	Excellent	Excellent	Good	Good	Good
Heading (Julian)	Late	Medium-Late	Medium-Early	Medium	Medium-Late
Plant Height (in.)	Medium	Medium-Tall	Medium-Short	Medium	Medium
Straw Strength	Very Good	Average	Good	Average	Average

Data Sources: 2024 Wheat Varieties for Kansas and the Great Plains, 2023 LCS CP Y4 Master, 2023 Carnige

DISEASE TOLERANCE			
	7-9: Susceptible	4-6: Intermediate	1-3: Resistant
Stripe Rust			
Leaf Rust			
Stem Rust			
Fusarium Head Blight			
WSMV			
Soil-Borne Mosaic			

All available public and private data used in compiling scores

END-USE QUALITY			
Overall Quality	Baking Quality	Dough Properties	Milling Quality
Desirable	Desirable	Desirable	Acceptable

Data obtained from LCS Quality Laboratory



Let your yields soar



Consistent
dryland and irrigated
performance



Very good stripe
rust, FHB and
Hessian fly tolerance



Excellent
straw strength

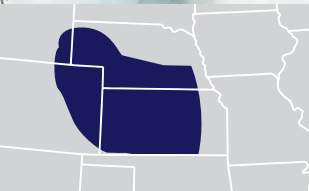


Acid soil
tolerance

HARD RED WINTER WHEAT

LCS Valiant

ADAPTATION



YIELD				
	BU/AC	LCS Valiant	Trial Avg.	MEAN
2022 KSU Untr. Dryland Wellington, KS	51			103% of mean
2022 KSU Dryland Hillsboro, KS	90			105% of mean
2022 OSU Balko, OK	40			111% of mean
2023 LCS Trial Imperial, NE	99			104% of mean
2022 LCS Trial Carnegie, OK	47			109% of mean
2022 LCS Trial Wellington, KS	50			104% of mean
2022 LCS Trial Russell, KS	73			109% of mean
2023 LCS Trial Enid, OK	98			104% of mean

AGRONOMIC FEATURES					
	LCS Valiant	SY Monument	WB 4401	KS Hamilton	Showdown
Test Weight	Average	Good	Good	Good	Average
Protein %	Above Avg.	Average	Average	Average	Average
Winter-Hardiness	Very Good	Excellent	Good	Good	Good
Heading (Julian)	Medium-Early	Medium-Late	Medium-Early	Medium	Medium-Late
Plant Height (in.)	Medium	Medium-Tall	Medium-Short	Medium	Medium
Straw Strength	Excellent	Average	Good	Average	Average

Data Sources: 2024 Wheat Varieties for Kansas and the Great Plains, 2023 LCS CP Y4 Master, 2023 Carnegie

DISEASE TOLERANCE			
	7-9: Susceptible	4-6: Intermediate	1-3: Resistant
Stripe Rust			
Leaf Rust			
Stem Rust			
Fusarium Head Blight			
WSMV			
Soil-Borne Mosaic			

All available public and private data used in compiling scores

END-USE QUALITY			
Overall Quality	Baking Quality	Dough Properties	Milling Quality
Desirable	Desirable	Desirable	Acceptable

Data obtained from LCS Quality Laboratory



Bred for the long haul

Excellent on variable soil types

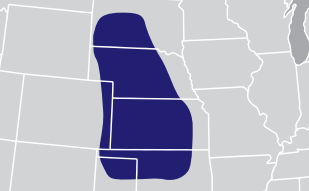
Packs protein with yield

Excellent disease package

Superior straw strength

HARD RED WINTER WHEAT LCS Chrome

ADAPTATION



YIELD			
	BU/AC	LCS Chrome	MEAN
2023 OSU Dryland Walters, OK	46		105% of mean
2022 KSU Dryland Assaria, KS	50		102% of mean
2022 KSU Dryland Newton, KS	62		110% of mean
2022 KSU Dryland Wellington, KS	50		102% of mean
2022 KSU Dryland Ellsworth, KS	74		108% of mean
2021 OSU Dryland Chickasha, OK	52		163% of mean
2021 OSU Dry Int. Mgmt. Chickasha, OK	72		138% of mean
2021 OSU Dryland Keyes, OK	27		100% of mean

AGRONOMIC FEATURES					
	LCS Chrome	SY Monument	WB 4401	KS Hamilton	Showdown
Test Weight	Good	Good	Good	Good	Average
Protein %	Above Avg.	Average	Average	Average	Average
Winter-Hardiness	Very Good	Excellent	Good	Good	Good
Heading (Julian)	Late	Medium-Late	Medium-Early	Medium	Medium-Late
Plant Height (in.)	Medium-Tall	Medium-Tall	Medium-Short	Medium	Medium
Straw Strength	Excellent	Average	Good	Average	Average

Data Sources: 2024 Wheat Varieties for Kansas and the Great Plains, 2023 LCS CP Y4 Master, 2023 Carnige

DISEASE TOLERANCE			
	7-9: Susceptible	4-6: Intermediate	1-3: Resistant
Stripe Rust			
Leaf Rust			
Stem Rust			
Fusarium Head Blight			
WSMV			
Soil-Borne Mosaic			

All available public and private data used in compiling scores

END-USE QUALITY			
Overall Quality	Baking Quality	Dough Properties	Milling Quality
Acceptable	Acceptable	Less Desirable	Acceptable

Data obtained from LCS Quality Laboratory



The weed control to take flight

Excellent
yield potential

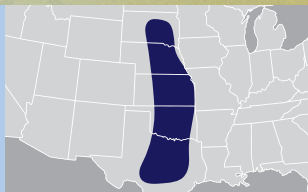
Curl mite
resistance

Solid
disease package

Excellent
standability

HARD RED WINTER WHEAT LCS Warbird AX

ADAPTATION



YIELD			
	BU/AC	LCS Warbird AX	Trial Avg. MEAN
2023 Kauffman Seeds Yoder, KS	47		129% of mean
2023 LCS Trial Wellington, KS	36		129% of mean
2023 LCS Trial Tonkawa, OK	40		111% of mean
2023 LCS Trial Enid, OK	106		112% of mean
2022 LCS Trial Wichita, KS	55		108% of mean
2022 LCS Trial Carnegie, OK	48		114% of mean
2022 LCS Trial St. John, KS	31		119% of mean
2022 LCS Trial Tonkawa, OK	88		104% of mean

AGRONOMIC FEATURES					
	LCS Warbird AX	Crescent AX	Doublestop CL+	Kivari AX	LCS Fusion AX
Test Weight	Very Good	Very Good	Very Good	Good	Average
Protein %	Above Avg.	Average	Above Avg.	Average	Average
Winter-Hardiness	Very Good	Very Good	Very Good	Very Good	Very Good
Heading (Julian)	Medium	Medium-Early	Late	Medium	Medium-Late
Plant Height (in.)	Medium-Short	Medium	Tall	Medium	Medium-Tall
Straw Strength	Excellent	Below Avg.	Very Good	Average	Average

Data Sources: 2024 Wheat Varieties for Kansas and the Great Plains, 2023 LCS CP Y4ACC, 2023 Carnegie

DISEASE TOLERANCE			
	7-9: Susceptible	4-6: Intermediate	1-3: Resistant
Stripe Rust			2
Leaf Rust			2
Stem Rust	9		
Fusarium Head Blight			3
WSMV			3

All available public and private data used in compiling scores

END-USE QUALITY			
Overall Quality	Baking Quality	Flour Protein	Milling Quality
Desirable	Desirable	Acceptable	Desirable

Data obtained from LCS Quality Laboratory





Grains and gains



Excellent choice for dual-purpose acres with CoAXium system



Curl mite resistance



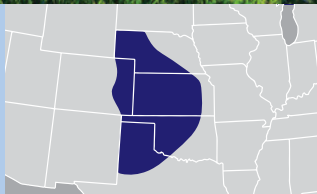
Top-notch disease package including FHB tolerance



Medium-early maturity with medium height

HARD RED WINTER WHEAT LCS Galloway AX

ADAPTATION



YIELD			
	BU/AC	LCS Galloway AX	MEAN
2023 KSU Dryland Wellington, KS	29		111% of mean
2023 Kauffman Seeds Conway Springs, KS	41		131% of mean
2023 Kauffman Seeds Lyons, KS	40		111% of mean
2023 Kauffman Seeds Yoder, KS	55		149% of mean
2023 LCS Trial Tonkawa, OK	49		136% of mean
2023 LCS Trial Russell, KS	37		109% of mean
2022 LCS Trial Russell, KS	83		106% of mean
2022 LCS Trial St. John, KS	28		108% of mean

AGRONOMIC FEATURES					
	LCS Galloway AX	Crescent AX	Doublestop CL+	Kivari AX	LCS Fusion AX
Test Weight	Good	Very Good	Very Good	Good	Average
Protein %	Above Avg.	Average	Above Avg.	Average	Average
Winter-Hardiness	Excellent	Very Good	Very Good	Very Good	Very Good
Heading (Julian)	Medium-Early	Medium-Early	Late	Medium	Medium-Late
Plant Height (in.)	Medium	Medium	Tall	Medium	Medium-Tall
Straw Strength	Excellent	Below Avg.	Very Good	Average	Average

Data Sources: 2024 Wheat Varieties for Kansas and the Great Plains, 2023 LCS CP Y4ACC, 2023 Carnige

DISEASE TOLERANCE			
	7-9: Susceptible	4-6: Intermediate	1-3: Resistant
Stripe Rust		5	
Leaf Rust		2	
Stem Rust		2	
Fusarium Head Blight		3	
WSMV		3	
Soil-Borne Mosaic		2	

All available public and private data used in compiling scores

END-USE QUALITY			
Overall Quality	Baking Quality	Dough Properties	Milling Quality
Acceptable	Less Desirable	Acceptable	Acceptable

Data obtained from LCS Quality Laboratory





Strong and steady



National Wheat Yield Contest winner



Drought-tolerant with top-end yield potential



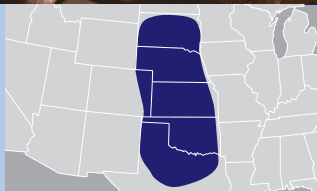
Excellent FHB tolerance



Very good straw strength and standability

HARD RED WINTER WHEAT LCS Steel AX

ADAPTATION



YIELD			
	BU/AC	LCS Steel AX	Trial Avg. MEAN
2023 CSU Dryland Burlington, CO	107 91		118% of mean
2023, UNL Rainfed Int. Mgmt. Saunders Cty., NE	43 30		140% of mean
2023 UNL Rainfed Red Willow Cty., NE	77 70		110% of mean
2023 Kauffman Seeds Yoder, KS	57 37		154% of mean
2023 KSU Dryland Hutchinson, KS	69 58		119% of mean
2023 KSU Dryland Garden City, KS	77 73		105% of mean
2023 OSU Dryland Chickasha, OK	81 77		105% of mean
2022 OSU Dryland Lahoma, OK	84 76		111% of mean

AGRONOMIC FEATURES					
	LCS Steel AX	Crescent AX	Doublestop CL+	Kivari AX	LCS Fusion AX
Test Weight	Very Good	Very Good	Very Good	Good	Average
Protein %	Average	Average	Above Avg.	Average	Average
Winter-Hardiness	Excellent	Very Good	Very Good	Very Good	Very Good
Heading (Julian)	Late	Medium-Early	Late	Medium	Medium-Late
Plant Height (in.)	Medium-Tall	Medium	Tall	Medium	Medium-Tall
Straw Strength	Excellent	Below Avg.	Very Good	Average	Average

Data Sources: 2024 Wheat Varieties for Kansas and the Great Plains, 2023 LCS CP Y4ACC, 2023 Carnegie

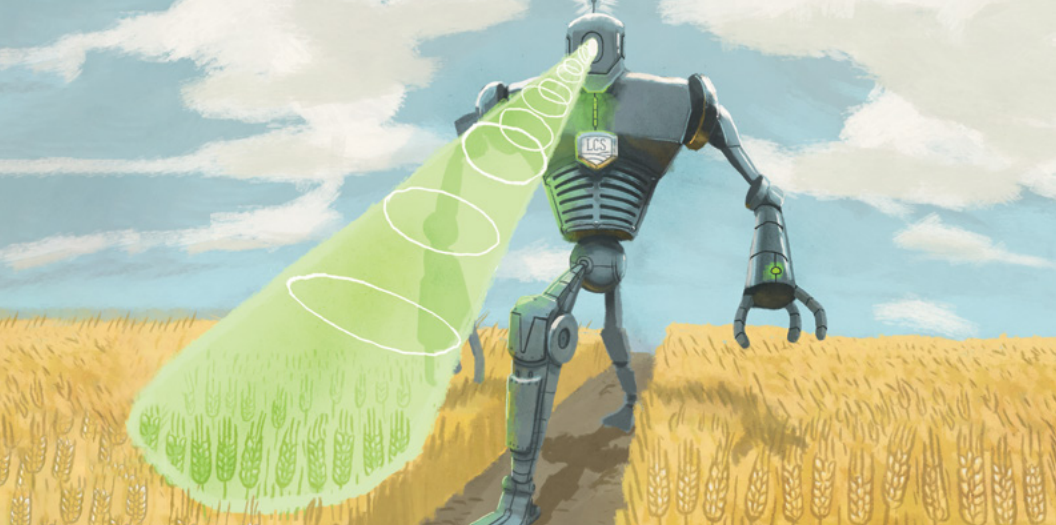
DISEASE TOLERANCE			
	7-9: Susceptible	4-6: Intermediate	1-3: Resistant
Stripe Rust			
Leaf Rust			
Stem Rust			
Fusarium Head Blight			
WSMV			
Soil-Borne Mosaic			

All available public and private data used in compiling scores

END-USE QUALITY			
Overall Quality	Baking Quality	Dough Properties	Milling Quality
Acceptable	Acceptable	Desirable	Desirable

Data obtained from LCS Quality Laboratory





Blast away grassy weeds



Most broadly adapted with excellent yield stability



Excellent straw strength



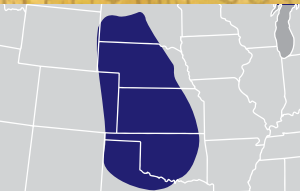
Quick emergence and excellent fall growth



Excellent acid soil tolerance

HARD RED WINTER WHEAT LCS Atomic AX

ADAPTATION



YIELD			
	BU/AC	LCS Atomic AX	Trial Avg. MEAN
2023 KSU Irrigated Garden City, KS	83		113% of mean
2023 KSU Dryland Wellington, KS	27		105% of mean
2023 OSU Altus, OK	55		125% of mean
2023 OSU Walters, OK	45		102% of mean
2022 OSU Chickasha, OK	76		121% of mean
2022 OSU Int. Mgmt. Apache, OK	56		124% of mean
2022 OSU Alva, OK	22		138% of mean
2022 UNL Rainfed Jefferson Cty., NE	106		112% of mean

AGRONOMIC FEATURES					
	LCS Atomic AX	Crescent AX	Doublestop CL+	Kivari AX	LCS Fusion AX
Test Weight	Good	Very Good	Very Good	Good	Average
Protein %	Above Avg.	Average	Above Avg.	Average	Average
Winter-Hardiness	Very Good	Very Good	Very Good	Very Good	Very Good
Heading (Julian)	Early	Medium-Early	Late	Medium	Medium-Late
Plant Height (in.)	Medium	Medium	Tall	Medium	Medium-Tall
Straw Strength	Excellent	Below Avg.	Very Good	Average	Average

Data Sources: 2024 Wheat Varieties for Kansas and the Great Plains, 2023 LCS CP Y4ACC, 2023 Carnegie

DISEASE TOLERANCE			
	7-9: Susceptible	4-6: Intermediate	1-3: Resistant
Stripe Rust			1
Leaf Rust			2
Stem Rust			9
Fusarium Head Blight			3
WSMV			8
Soil-Borne Mosaic			1

All available public and private data used in compiling scores

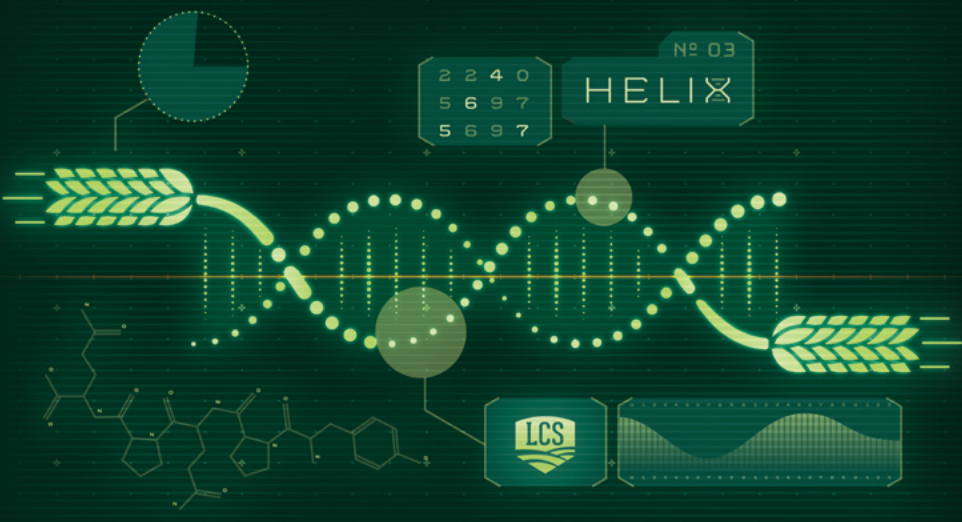
END-USE QUALITY			
Overall Quality	Baking Quality	Dough Properties	Milling Quality
Acceptable	Unacceptable	Most Desirable	Less Desirable

Data obtained from LCS Quality Laboratory

This variety requires the use of Certified Seed Only. A signed Stewardship Agreement is required before purchase.

FVP Unauthorized seed multiplication prohibited by law. U.S. Plant Variety Protection Number has been granted.





Engineered to beat weeds

 **National Wheat Yield Contest** winner

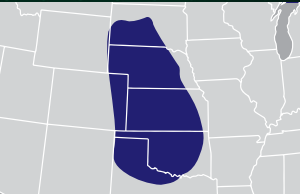
 **Superior** disease package

 **Excellent top-end yield** with ability to handle tough acres

 **Excellent** drought tolerance

HARD RED WINTER WHEAT LCS Helix AX

ADAPTATION



YIELD			
	BU/AC	LCS Helix AX	MEAN
2023 OSU Altus, OK	48		109% of mean
2023 OSU Int. Mgmt. Chickasha, OK	93		108% of mean
2023 Kauffman Seeds Yoder, KS	49		132% of mean
2022 OSU Chickasha, OK	70		109% of mean
2022 OSU Lahoma, OK	89		117% of mean
2022 KSU Dryland Garden City, KS	84		111% of mean
2022 KSU Dryland Belleville, KS	91		110% of mean
2022 KSU Irrigated Hugoton, KS	129		119% of mean

AGRONOMIC FEATURES					
	LCS Helix AX	Crescent AX	Doublestop CL+	Kivari AX	LCS Fusion AX
Test Weight	Very Good	Very Good	Very Good	Good	Average
Protein %	Above Avg.	Average	Above Avg.	Average	Average
Winter-Hardiness	Very Good	Very Good	Very Good	Very Good	Very Good
Heading (Julian)	Medium-Early	Medium-Early	Late	Medium	Medium-Late
Plant Height (in.)	Medium	Medium	Tall	Medium	Medium-Tall
Straw Strength	Very Good	Below Avg.	Very Good	Average	Average

Data Sources: 2024 Wheat Varieties for Kansas and the Great Plains, 2023 LCS CP Y4ACC, 2023 Carnige

DISEASE TOLERANCE			
	7-9: Susceptible	4-6: Intermediate	1-3: Resistant
Stripe Rust			2
Leaf Rust			1
Stem Rust			1
Fusarium Head Blight			3
WSMV			8
Soil-Borne Mosaic			1

All available public and private data used in compiling scores

END-USE QUALITY			
Overall Quality	Baking Quality	Dough Properties	Milling Quality
Desirable	Desirable	Most Desirable	Acceptable

Data obtained from LCS Quality Laboratory





A quantum leap in weed eradication



Excellent grazing potential



Very good FHB and stripe rust tolerance



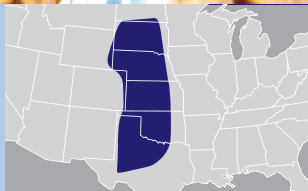
Highest protein and test weight in the CoAXium lineup



Very good dryland performance

HARD RED WINTER WHEAT LCS Photon AX

ADAPTATION



YIELD			
	BU/AC	◆ LCS Photon AX ◆ Trial Avg.	MEAN ▶
2023 OSU Altus, OK	57		130% of mean
2023 LCS Trial Carnegie, OK	85		104% of mean
2022 LCS Trial Enid, OK	64		114% of mean
2022 OSU Balko, OK	42		117% of mean
2022 OSU Int. Mgmt. Apache, OK	52		116% of mean
2022 OSU Dual Purpose El Reno, OK	48		112% of mean
2021 OSU Altus, OK	70		109% of mean
2021 OSU Kildare, OK	38		136% of mean

AGRONOMIC FEATURES					
	LCS Photon AX	Crescent AX	Doublestop CL+	Kivari AX	LCS Fusion AX
Test Weight	Very Good	Very Good	Very Good	Good	Average
Protein %	Above Avg.	Average	Above Avg.	Average	Average
Winter-Hardiness	Very Good	Very Good	Very Good	Very Good	Very Good
Heading (Julian)	Medium	Medium-Early	Late	Medium	Medium-Late
Plant Height (in.)	Medium-Tall	Medium	Tall	Medium	Medium-Tall
Straw Strength	Good	Below Avg.	Very Good	Average	Average

Data Sources: 2024 Wheat Varieties for Kansas and the Great Plains, 2023 LCS CP Y4ACC, 2023 Carnegie

DISEASE TOLERANCE			
	7-9: Susceptible	4-6: Intermediate	1-3: Resistant
Stripe Rust			2
Leaf Rust			6
Stem Rust			9
Fusarium Head Blight			
WSMV			8
Soil-Borne Mosaic			6

All available public and private data used in compiling scores

END-USE QUALITY			
Overall Quality	Baking Quality	Dough Properties	Milling Quality
Desirable	Desirable	Most Desirable	Acceptable

Data obtained from LCS Quality Laboratory





Striking seed, strong straw



Newest hard white winter wheat



Excellent adaptation to High Plains irrigated and dryland



Solid disease package with FHB and stripe rust tolerance

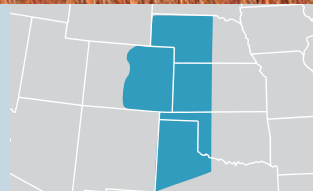


Huge seed, high protein, excellent milling and baking properties

HARD WHITE WINTER WHEAT

LCS White Lightning

ADAPTATION



YIELD			
	BU/AC	LCS White Lightning	Trial Avg. MEAN
2023 LCS Trial Imperial, NE	93		98% of mean
2023 KSU Dryland Larned, KS	44		100% of mean
2023 KSU Irrigated Garden City, KS	68		93% of mean
2022 LCS Trial Colby, KS	44		105% of mean
2022 LCS Trial Garden City, KS	72		107% of mean
2022 LCS Trial Hugoton, KS	106		104% of mean
2022 LCS Trial Logan, KS	27		104% of mean
2022 LCS Trial Enid, OK	69		108% of mean

AGRONOMIC FEATURES					
	LCS White Lightning	SY Monument	WB 4401	KS Hamilton	Showdown
Test Weight	Good	Good	Good	Good	Average
Protein %	Above Avg.	Average	Average	Average	Average
Winter-Hardiness	Very Good	Excellent	Good	Good	Good
Heading (Julian)	Medium	Medium-Late	Medium-Early	Medium	Medium-Late
Plant Height (in.)	Medium	Medium-Tall	Medium-Short	Medium	Medium
Straw Strength	Excellent	Average	Good	Average	Average

Data Sources: 2024 Wheat Varieties for Kansas and the Great Plains, 2023 LCS CP Y4 Master, 2023 Carnige

DISEASE TOLERANCE			
	7-9: Susceptible	4-6: Intermediate	1-3: Resistant
Stripe Rust			
Leaf Rust			
Stem Rust			
Fusarium Head Blight			

All available public and private data used in compiling scores

END-USE QUALITY			
Overall Quality	Baking Quality	Flour Protein	Milling Quality
Desirable	Acceptable	Most Desirable	Desirable

Data obtained from LCS Quality Laboratory



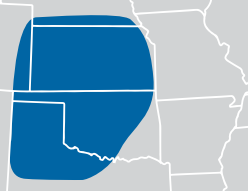


FORAGE WHEAT

T173

Make hay with T173

ADAPTATION



FORAGE BARLEY

LCS Saturn

A ringer for forage barley



High
tonnage potential



Taller plant
stature with long,
thin leaves



Excellent
straw strength



Good option
for cover
crop mixes



Awnless
variety, ideal
for grazing or haying



Excellent
leaf rust tolerance



Very good
stripe and leaf
rust tolerance



Higher
than average
protein content



PVP Unauthorized seed multiplication prohibited by law.
U.S. Plant Variety Protection Number has been granted.



PVP Unauthorized seed multiplication prohibited by law.
U.S. Plant Variety Protection Number has been granted.

LCS Saturn is an awned forage barley

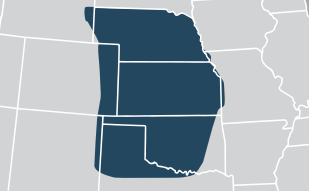


TRITICALE

LCS Bar

Raise the bar on forage yield

ADAPTATION



Medium height
with **excellent**
standability



Excellent
tolerance to stripe,
leaf and stem rust



Good
leaf-to-stem ratio



Very good
forage and grain yield



Superior wheat quality

Limagrain Cereal Seeds is the only private breeding program with a dedicated, state-of-the-art quality lab. The LCS Quality Laboratory utilizes a comprehensive set of data, compiled over multiple years, to determine the end-use quality of all wheat varieties we release. Key attributes include:

Baking quality, including loaf volume, cookie diameter and dough rheology.

Milling quality, including flour yields and protein loss from grain to flour.

Flour protein, including water absorption, gluten strength and percentage of protein content.

These characteristics are weighted and combined into a single score: baking quality (30%), dough properties (20%), milling quality (40%), test weight (5%) and flour protein (5%). Overall end-use quality is classified in one of four categories:

Most Desirable. Elite varieties with excellent intrinsic (kernel) qualities and a superior combination of milling, baking and dough properties.

Desirable. High-demand varieties with strong intrinsic qualities and very good to good milling, baking and dough properties.

Acceptable. One or more quality parameters may have minor flaws. Overall, these varieties are acceptable to end users.

Less Desirable. Varieties with quality parameters that are less than adequate for current end-user standards or a single critical flaw.



Cutting-edge wheat genetics

LCS has access to the most advanced wheat and barley genetics in the world through the exchange of elite germplasm with international parent company Group Limagrain. We take the best and make it even better, using speed breeding technologies to create new, improved varieties adapted specifically for our farmers' climates, soils and growing conditions.

Led by Dr. Marla Barnett, our Central Plains breeding team is developing targeted, high-performance genetics for release in the coming growing seasons:

- Solid stem varieties
- Varieties with greater disease tolerance, including wheat streak mosaic virus, Fusarium head blight, stripe rust and barley yellow dwarf
- Next-generation CoAXium and Clearfield wheat for weed control
- Awnless wheat and barley
- Varieties with improved milling and baking quality

Coming soon to a field near you



LCS Mojo

Next-level WSMV tolerance

- HRWW with genetic resistance to wheat streak mosaic virus
- Very good winter-hardiness
- Anticipated commercial seed availability in 2026



LCS Aries

Big yield, early to harvest

- HRWW with early maturity
- Excellent straw strength
- Solid disease package
- Anticipated commercial seed availability in 2026

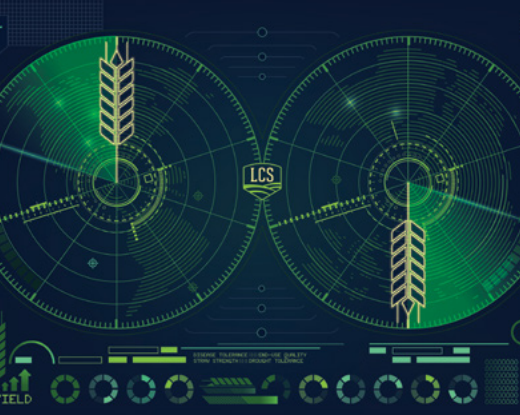


LCS Cowie AX

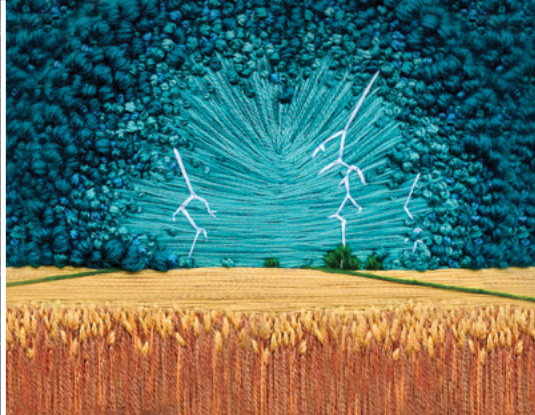
Elite dual-purpose wheat

- HRWW moo-velous for grazing and grain
- Quick to establish, lush vegetation
- CoAXium grassy weed control
- Anticipated commercial seed availability in 2025

Game-changing new wheat genetics



LCS Radar



LCS White Lightning



LCS Warbird AX



LCS Galloway AX

LimagrainsCerealSeeds.com/CP

📞 316.452.3505

Limagrain 